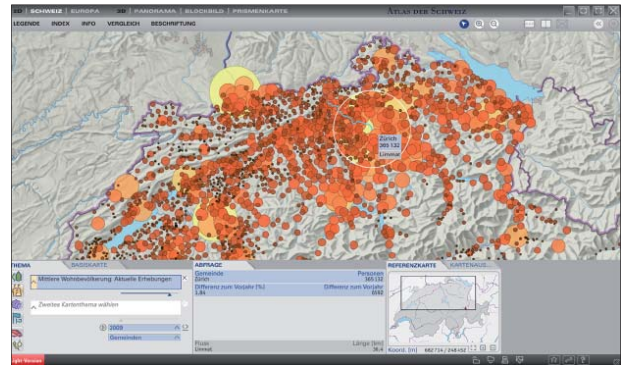


Swiss Map Products – Applied for Prix Carto 2011

Atlas of Switzerland

The Atlas of Switzerland includes 2,000 themes structured in seven topics, such as transport, energy, nature and environment, economy. These themes are visualised in high-quality and interactive 2D maps of Switzerland and Europe, 3D panoramas, 3D block diagrams and 3D prism maps. Beside a multiplicity of display options (linear network maps, 2D diagrams), several analysis options are available, such as 3D profiles, or the selection and comparison of individual values.



Institute of Cartography and Geoinformation, Zurich
www.atlasofswitzerland.ch

Blue Marble 3000

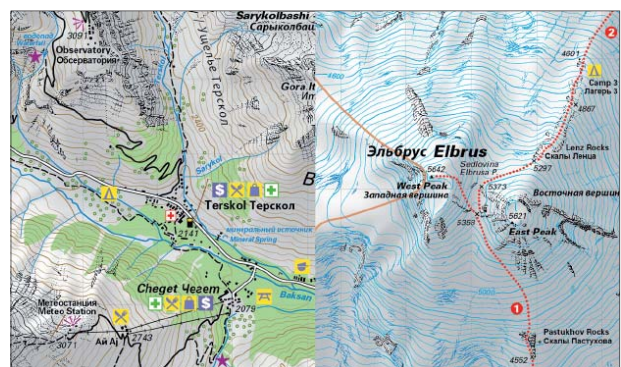
This visualisation shows the Earth in a realistic representation, starting with the last glacial maximum 21,000 years ago, and ends in 1,000 years in the future. The ice coverage, the vegetation, as well as the sea and lake levels are taken into account. Additional information, such as the CO₂-content of the air, the annual average temperature, and the population density are illustrated. The visualisation is a typical mashup of already existing data.



zhaw – School of Engineering, Winterthur
<http://radar.zhaw.ch/bluemarble3000.html>

Climbing Map Elbrus

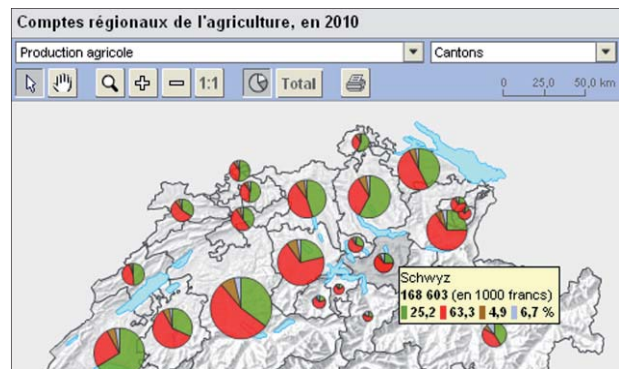
This topographic and thematic map at a scale of 1:50,000 is for climbers and trekking tourists. The backside of the map provides additional information, for example pictures with marked climbing routes, description of hiking routes in three languages with the corresponding elevation profiles, a overview map at 1:670,000, a variety of village maps, a panorama map, and renderings of the local flora and fauna. The map is compatible with GPS devices, and combines information normally found in tourist guides with a map.



Sandra Greulich and Sacha Wettstein, Berne
www.climbing-map.com

FlashInfo – Easy Visualisation of Statistic Data

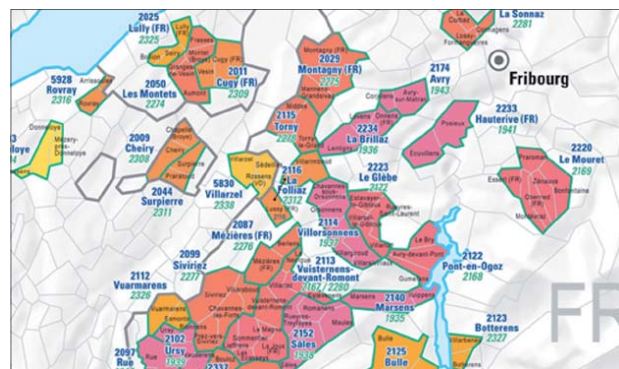
This mapping application can create thematic maps for web pages and other digital media, as well as for print production, using a variety of statistical data. FlashInfo focuses on a correct cartographic presentation and optimal solutions. Currently, the model includes 40 administrative classifications of Switzerland and Europe, and offers the functionality to create interactive presentations. Beside single maps with various chart types, entire (time) series can be composed and played back.



Swiss Federal Statistical Office, Neuchâtel
www.bfs.admin.ch

Map of Municipality Mutations 2000–2010

Already since 1990, the number of municipality mergers is constantly increasing. A general map together with a publication document the increasing dynamics of these fusions and give detailed information about past abolishments, fusions, new foundations and name changes of Swiss municipalities since 2000. Mutation numbers according to the historic municipality index of Switzerland are included, as well as names and numbers of former and new municipalities.



Swiss Federal Statistical Office, Neuchâtel
www.bfs.admin.ch

Globi in the Snow

Globi, a parrot, has been searching the whole of Switzerland for places where one can enjoy all kinds of winter sports. Beside places for skiing and snowboarding there are locations for skating, tobogganing, cross country skiing or snowshoeing. Small, more familiar and cheaper locations are also mentioned. The new map with 100 winter excursions for the whole family is printed on glossy paper and can also be used as a poster.



Hallwag Kümmerly+Frey AG, Schönbühl
www.swisstravelcenter.ch

Switzerland during the Last Glacial Maximum

“Switzerland during the Last Glacial Maximum (LGM), 1:500,000” is a paleogeographical map. It shows the topographical surface of Switzerland during the maximum extent of glaciation at the height of the last Ice Age about 24,000 years ago. The latest results of research on the Ice Age in Switzerland are visualised on this map. The LGM map depicts an event in the Earth’s history that strongly shaped today’s landscape of Switzerland. This event also played a major role in the occurrence and distribution of gravel deposits, which are economically important as raw material and as drinking-water aquifers.



Swiss Federal Office of Topography swisstopo, Wabern
www.swisstopo.ch

MapRank Search: Unique Technology to Explore Thousands of Maps in Time

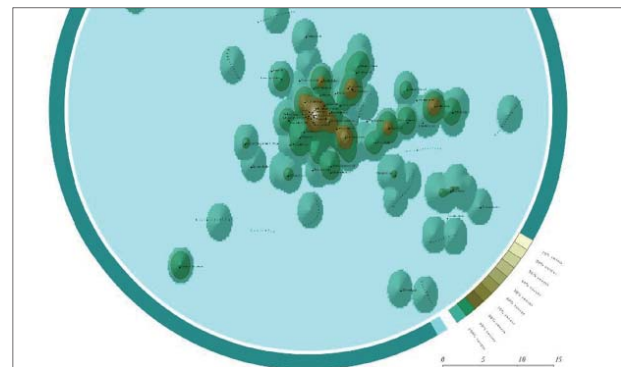
MapRank Search is a central entry point for searching printed and digital maps in map collections and archives by various geodata providers. This unique search technology unites traditional geospatial catalogues and map libraries. It ensures through innovative and user-friendly tools and data bases a quick search result based on different search criteria.



Klokantech GmbH, Baar
www.klokantech.com/mapranksearch

New City Landscape

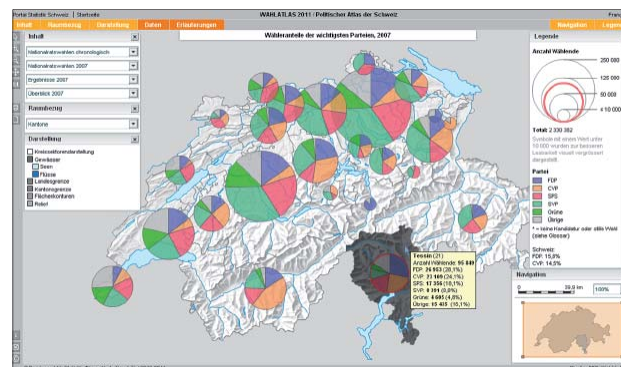
The New City Landscape maps show the Twitter activity of an urban area as a landscape map. The map is based on data with integrated GPS information. The online messages can be spatially references, which in turn allows for the creation of a “city history” in the form of a virtual landscape. The map series shows the increasing virtualisation of our daily life and highlights the changing perception of a predominantly urban space.



Centre for Advanced Spatial Analysis, London
<http://urbantick.blogspot.com>

Political Atlas of Switzerland

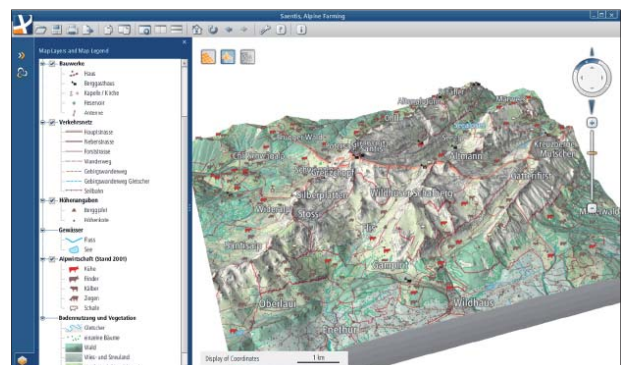
The specialised atlas on Swiss politics contains a comprehensive database and more than 4000 maps that answer almost every question about current or historical Swiss elections and votes. The free online version contains all results since 1991. A supplementary DVD shows all results going back to 1848 (to be published in 2011). Thematic and chronological access to vote and election results, including participation in votes and elections.



Swiss Federal Statistical Office, Neuchâtel
www.bfs.admin.ch

Swiss World Atlas Interactive

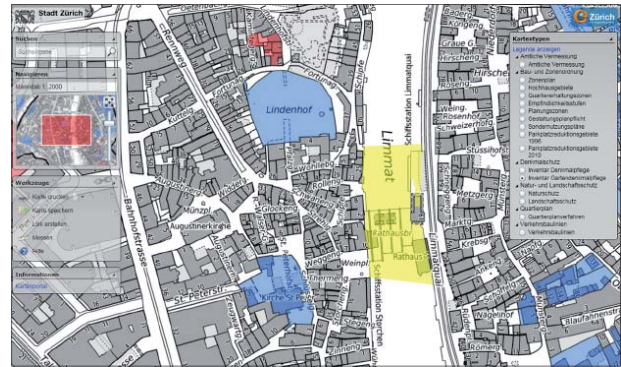
In October 2010, the Swiss World Atlas (SWA) was expanded by an interactive Web Atlas, which further increases the attractiveness of the atlas with new and innovative forms of use. The project team pursued various goals taking the specifics of the Swiss World Atlas into account, for example, to warrant the expectations of teachers regarding current trends and ideas about a modern geography curriculum, as well as sustainability and feasibility. The current version contains more than 70 maps, several block diagrams, and virtual globes..



Institute of Cartography and Geoinformation, Zurich
www.swissworldatlas.ch

ZueriPlan

Children's playground or retirement home? Heritage conservation or urban development? The location of these zones can be visualised interactively with the ZueriPlan web site, which is online since 2011. The user-friendly application simplifies the handling of a multiplicity of map types and topics which can be combined with search items.



GIS-Zentrum Stadt Zürich
www.stadt-zuerich.ch/zueriplan

Map Products Prix Carto 2007

All map products which applied for Prix Carto 2007 are listed and described in brief at www.cartography.ch/prixcarto/2007



Awarded map booklet in 2007:
HADES-Exkursionsführer "Wege durch die Wasserwelt",
www.hydrologie.unibe.ch/hades/einfuehrung/wege.html
(see also page 9)

Map Products Prix Carto 2009

All map products which applied for Prix Carto 2009 are listed and described in brief at www.cartography.ch/prixcarto/2009



Awarded map application in 2009:
Swiss Map Mobile 2009 iPhone Edition,
www.kartografie.ch/prixcarto/2009/seiten/map_mobile.html
(see also page 9)